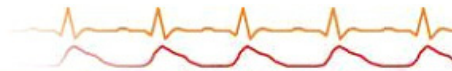




# **Instruction for use of Nova SpO2 Software**

The text is subject to change without further notice.  
 March 19, 2018, Version 4.0



## Table of Contents

	Page
1. Warning .....	3
2. Features .....	3
3. Requirements of computer system .....	3
4. Operation Instruction .....	3
5. Problem shooting .....	12



## 1. Warnings



Warning: The software must be operated by trained personnel only.



Warning: The software can be used only with the SA310 of Rossmax

InnoTek Corp. for the safety of the users and the device.

## 2. Features

The software is used with SA310 as follows:

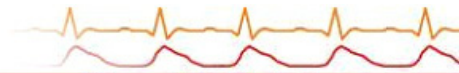
- Connect to SA310 with wireless Dongle.
- Collect real-time data transmission from SA310.
- Active or inactive data transmission from SA310.
- Store data of memory or real-time measurement data to the file system.

## 3. Requirements of computer system

- CPU over 1GHz
- 256MB RAM or above
- USB 2.0 or above
- Windows XP Service Pack 2 or above (Windows is the trademark of Microsoft Co.)

## 4. Operation Instruction

- SA310 wireless transmission ON/OFF
- ✓ Turn on SA310, press **SET** for 2-second to enter the SETUP screen. Press **SET** to skip the setup for the high and low of SpO2 and heart rate; also, the memory interval and then enter the setup for wireless transmission with the icon **UUOF** appearing. Then, press the **▲** or **▼** to have the icon **UUOn** appeared for activating the wireless transmission.
- ✓ For turning off the wireless transmission, please press or to have the icon **UUOF** appeared for inactivating the wireless transmission.



Warning: The wireless transmission is for a maximum distance of 3m~5m. Please

keep the device and wireless transmitter close-by for successful wireless transmission.



Warning: SA310 are to be used with the Nova SpO2 software.


- Installation and setup of wireless Dongle
- ✓ Please install and setup the wireless Dongle for the first time in use in accordance with the following steps :
- ✓ Please connect the wireless Dongle in the SA310 package to the USB port of the computer.

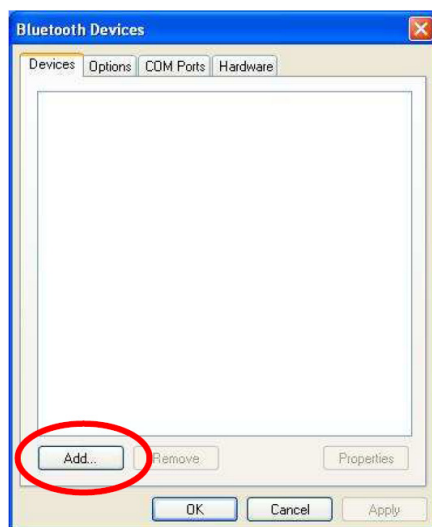
The screen of wireless Dongle search and installation will appear automatically on Windows® XP Service Pack 2 or above:

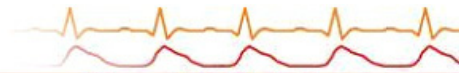


Warning: For the system other than Windows® XP Service Pack 2 or above,

please have it upgraded to Windows® XP Service Pack 2 or above for application.

- ✓ Double click the icon  on the left bottom of the screen and then press the [Add] key.





The Add device Wizard on the screen is as below and please click the option of “My device is set up and ready to be found” and press “Next” key.



Warning: While searing for wireless Dongle, please have SA310 and wireless

transmission activated.



The screen of searching is on



The icon “Pulse Oximeter” appears on the screen at the end of the successful Search.





- ✓ Click the “Pulse Oximeter” and then press the “Next” key.



- ✓ Please select the “Let me choose my own passkey” option and then key in the passkey as “0000 “ and then press “Next” key.



- ✓ The COM port appears on the screen and please document the value of the Outgoing COM port. As shown below in graphic COM4, please choose the assigned Outgoing COM port for data collection in the “Connection” software setup.





Warning: The value of the Outgoing COM port varies due to the chosen computer or USB port.

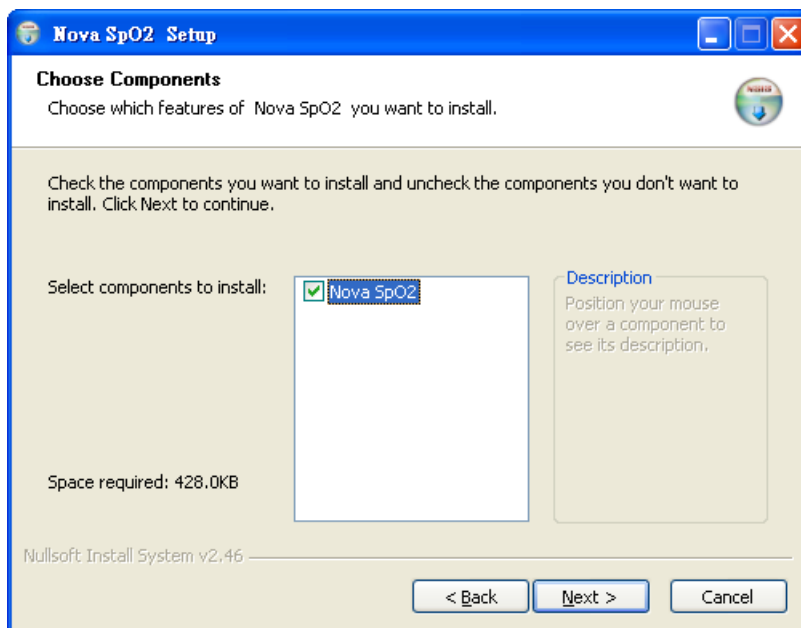
- Software installation
- ✓ Insert the CD of the SA310 in CD-ROM drive for automatic installation. Please activate the Setup.exe file in the CD if the automatic installation is not available.



Warning: Please use SA310 and Nova SpO2 software together.

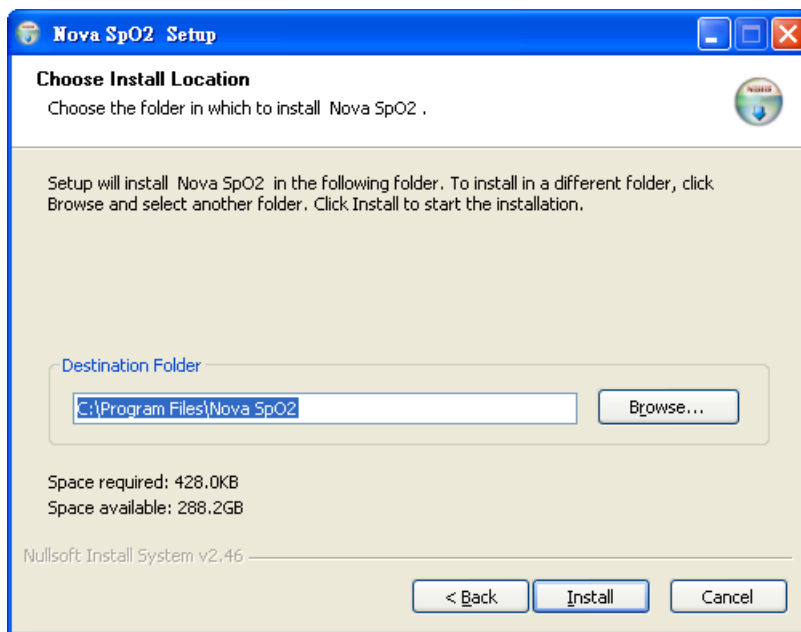



Press [Next]



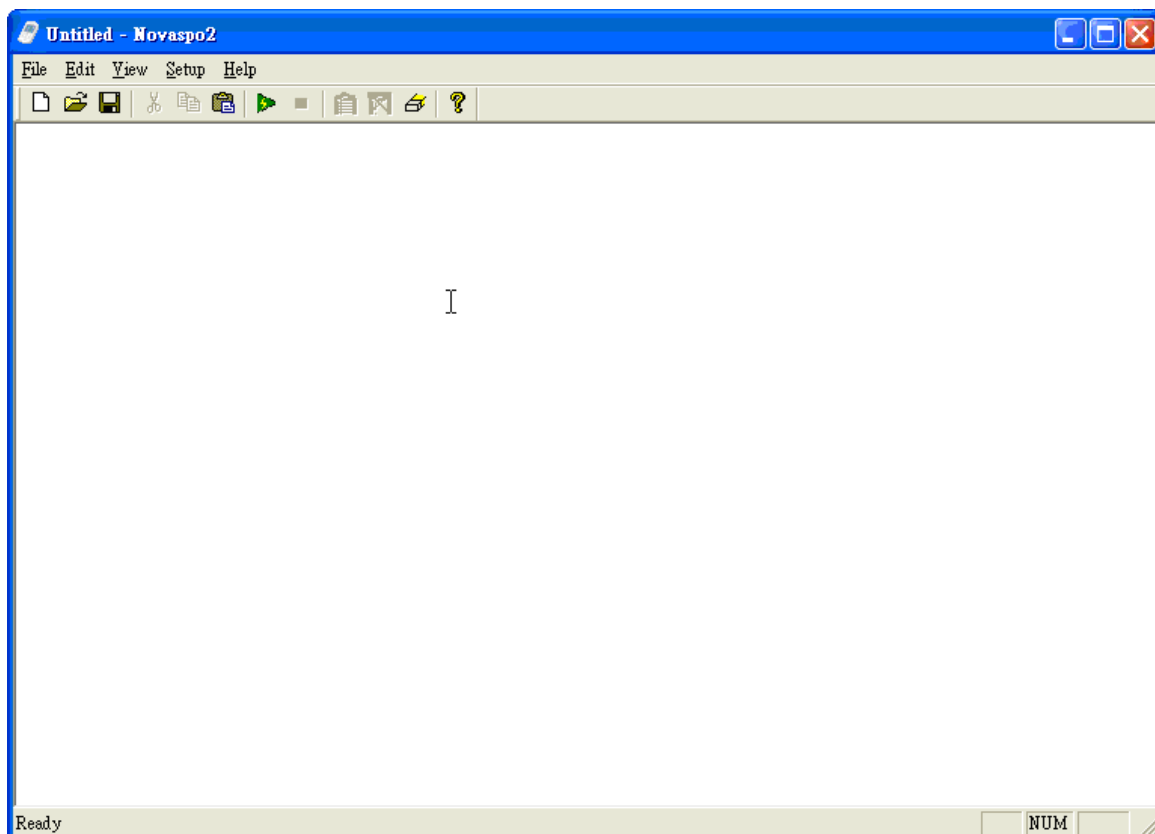


Press [Isntall]




- ✓ Click  Nova SpO2 at the [Start]-[All Programs]-[Nova SpO2] to execute the software upon the completion of installation.

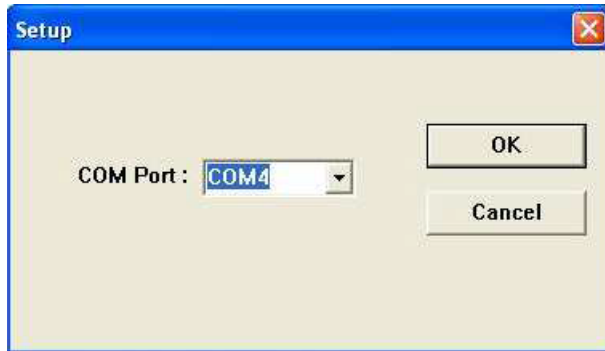
The screen of software as displayed







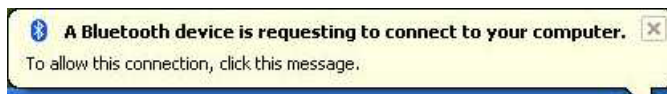
- Connection
- ✓ Press  on Nova SpO2 for connection with the option of COM port appearing. Please select the Outgoing COM Port while setting up the wireless Dongle, for ex., COM4 and then press OK to start.



Warning: Please be sure that SA310 is and wireless transmission setup is ON;

also, wireless Dongle is installed and setup before connection.

Please click the passkey screen below.



Enter the passkey “0000” on the screen below.






- ✓ Successful connection is shown as below.



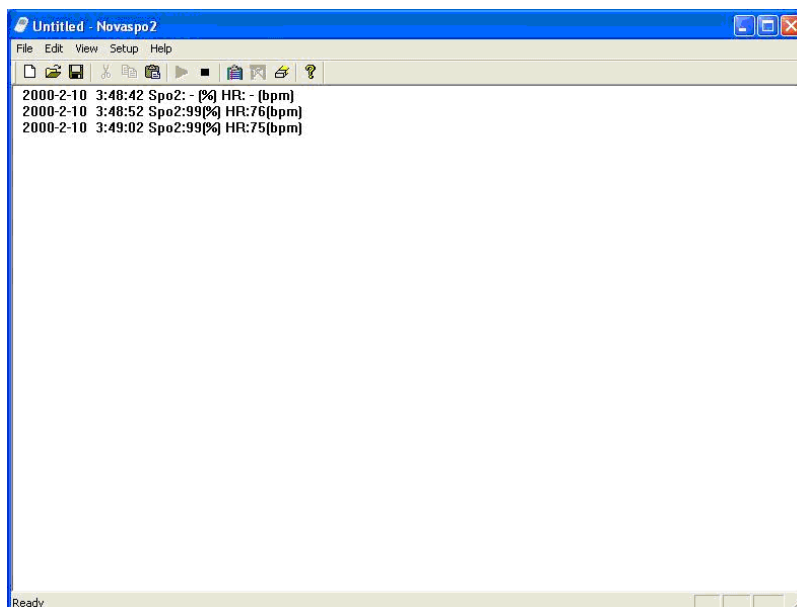
The screen of software is shown as below:

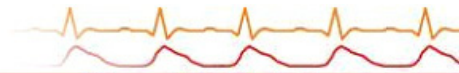


- ✓ Press  to stop connection.

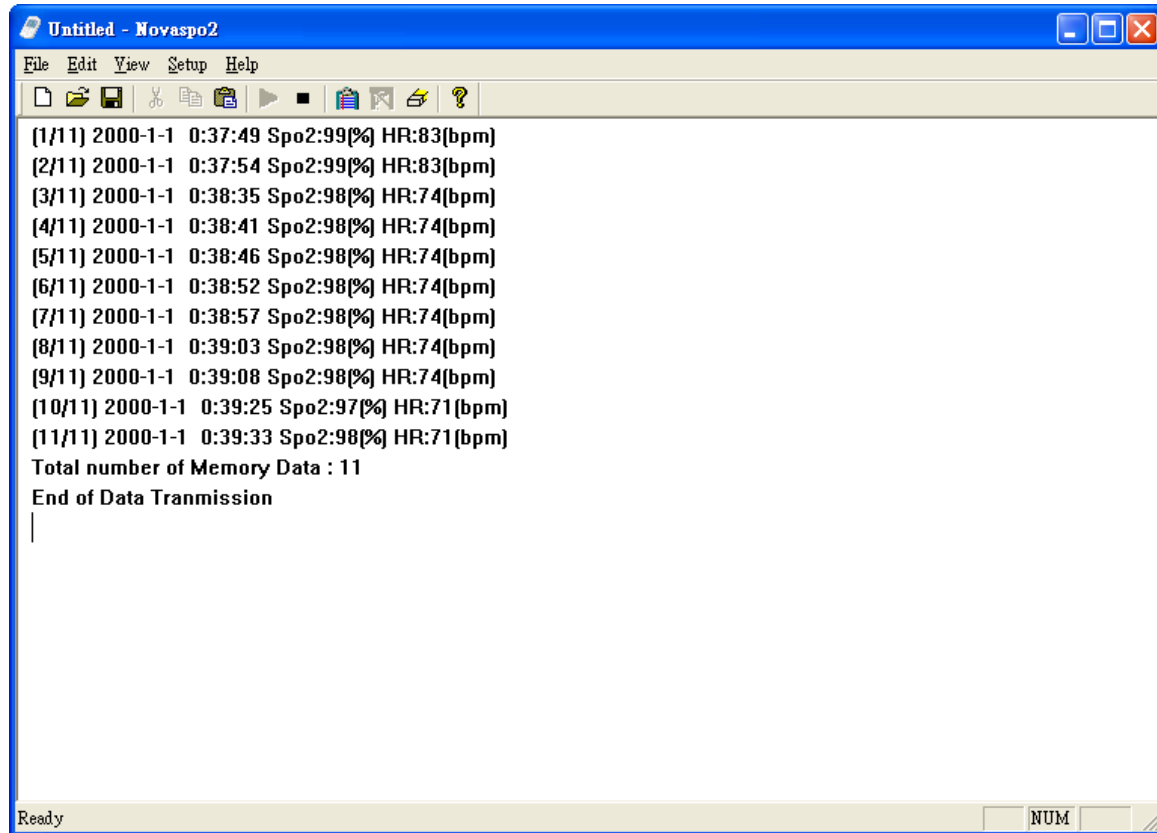
- Real-time transmission




- ✓ Year, Date, Time, SpO2, and heart rate is transmitted in every 10-second as below. If the value of SpO2 and HR is not available, it is shown as “–”.

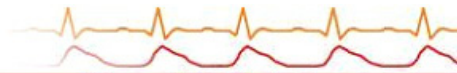




- Memory transmission
- ✓ Press  to have the memory data transmitted as follows:



- ✓ Press  to stop data transmission at anytime.
- ✓ Press  to save to TEXT file at the end of data transmission. Text file can be opened with the "Notepad".
- ✓ Press  to clear the screen.
- ✓ It will take around 40 minutes for the full memory of data (depending on the choice of computer in service).



## 5. Problem shooting

### (1) Connection failure

- Please confirm SA310 device is activated with wireless transmission in service.
- Please confirm wireless Dongle is inserted to USB port correctly and with driver properly installed and setup.
- Please confirm proper COM port is selected.
- Please confirm the device and wireless Dongle are kept within a reasonable distance (maximum 3~5m).

### (2) Successful connection without data transmission

- Please confirm correct COM port is selected.

### (3) File-saving failure

- Please confirm hard disk is with sufficient space.

### (4) Interruption of data transmission

- Please confirm the device is with sufficient power supply.
- Please confirm the device and wireless Dongle are kept within a reasonable distance (maximum 3~5m).



Rossmax InnoTek Corp.

12F, No. 189, Kang Chien Rd., Taipei 114, Taiwan

Tel: + 886-2-2659-7888

Fax: + 886-2-2659-7666

[www.rossmax.com](http://www.rossmax.com)