

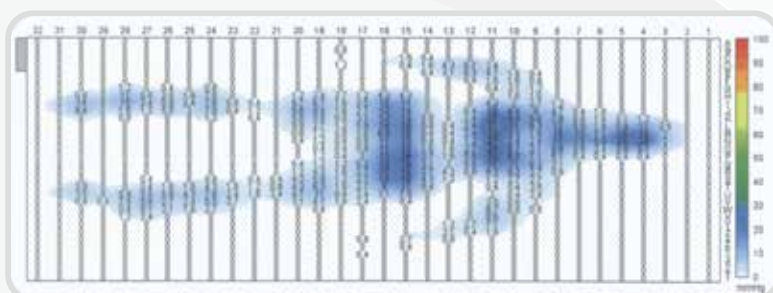
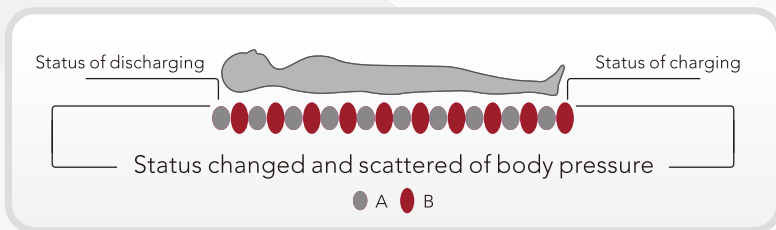
Air Mattress Cell

Model: AM40



Adjustable hangers to suit any kind of hospital bed frame

2 to 1 alternating therapy



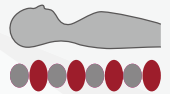
- Cell mattress
- 2 to 1 alternating therapy
- Adjustable hangers for most bed types
- Comfortable Nylon mattress
- High quality pump
- Weight indicator pressure adjustment setting
- 12 minutes cycling time
- Near silent low noise
- For treatment of patients at medium to high risk of pressure ulcers



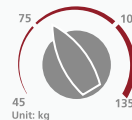
Low noise design



Comfortable Nylon mattress



2 to 1 alternating therapy



Easy to use adjustment



Adjustable hangers to suit any kind of hospital bed frame

Accessories



High Quality Rubber Tube



fuse



Spare Cell

Model	Qty per carton	Carton volume
AM 40	2 pcs	0.0579 cbm/ctn
QTY per 20'	QTY per 40'	QTY per 40'HQ
1000 pcs	2000 pcs	2246 pcs

Storage and Transportation Condition
-18°C to 43°C (0°F to 110°F)
10~90% RH

www.rossmax.com

Epaper_AM40_ver1925