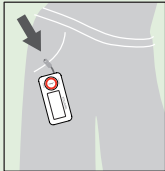




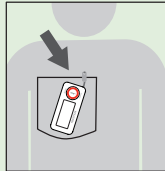
### 3-Axis Technology

3-Axis Technology detect movement in 3 directions (X, Y, Z plane detection) with high accuracy. The 3-Axis sensor allows the user to place the activity monitor in either pocket or bag rather than clipping it onto a belt. This 3-Axis Technology makes walking, fitting, and jogging motion monitoring easily.

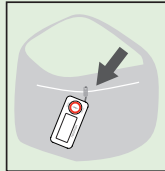
### Recommended Attaching Position



For Pant Pocket



For Shirt Pocket



For Bag / Backpack

### Accessories

- strap with clip



For PA-J75



For PA-S20 / PA-W55 / PA-F65



Rossmax activity monitors provide a 2-year warranty from the date of purchase.

### Rossmax Group

**rossmax**  
TAIWAN

**rossmax**  
SWISS

**rossmax**  
INDIA

**rossmax**  
JAPAN

**rossmax**  
SHANGHAI

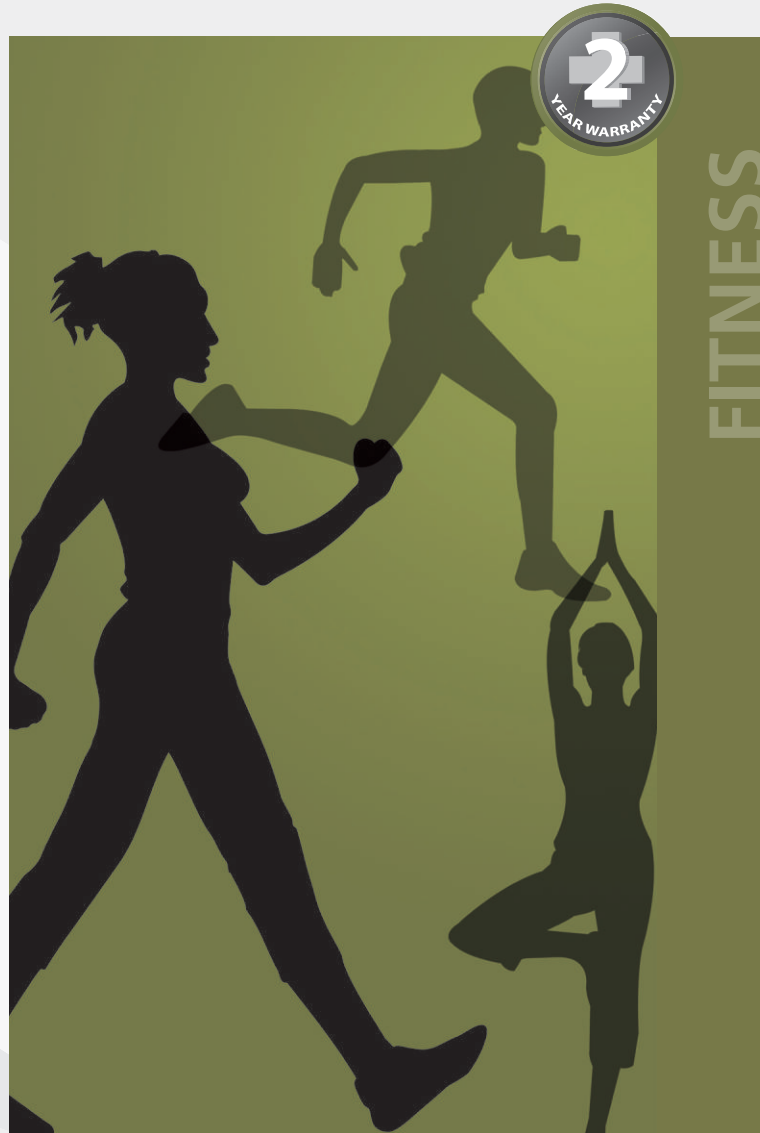
**rossmax** 脉博士  
CHINA

**Rossmax International Ltd.**  
12F., No.189, Kang Chien Rd.,  
Taipei 114, Taiwan  
Tel +886 2 2659 7888  
Fax +886 2 2659 7666  
info@rossmax.com

**Rossmax Swiss GmbH**  
Tramstrasse 16, 9442 Berneck  
Switzerland  
Tel +41 71 747 11 93  
Fax +41 71 747 11 91  
emea@rossmax.com

[www.rossmax.com](http://www.rossmax.com)

OBM\_OP\_PA\_EN\_ver1337



**Activity Monitor**

Model: PA-S20 Simple



- 3-Axis Technology
- Steps count
- Distance travelled
- Calories burned
- Power-saving



Model: PA-F65 Fitting



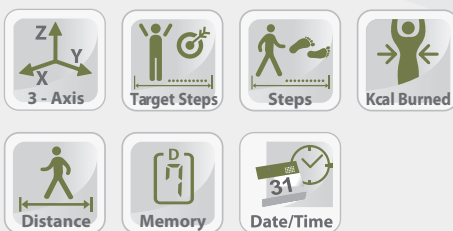
- 3-Axis Technology
- Monthly target weight lose setting
- Weight lost
- Calories burned
- Fitting time spent
- Recommended diet calories
- 7 days memory
- Daily steps count
- Date/Time display
- Auto daily resetting
- Power-saving



Model: PA-W55 Walking



- 3-Axis Technology
- Target steps setting
- Walking steps count
- Calories burned
- Walking distance travelled
- 7 days memory
- Daily steps count
- Date/Time display
- Auto daily resetting
- Power-saving



Model: PA-J75 Jogging



- 3-Axis Technology
- Target distance setting
- Jogging distance travelled
- Calories burned
- Jogging speed
- 7 days memory
- Daily steps count
- Date/Time display
- Auto daily resetting
- Power-saving

