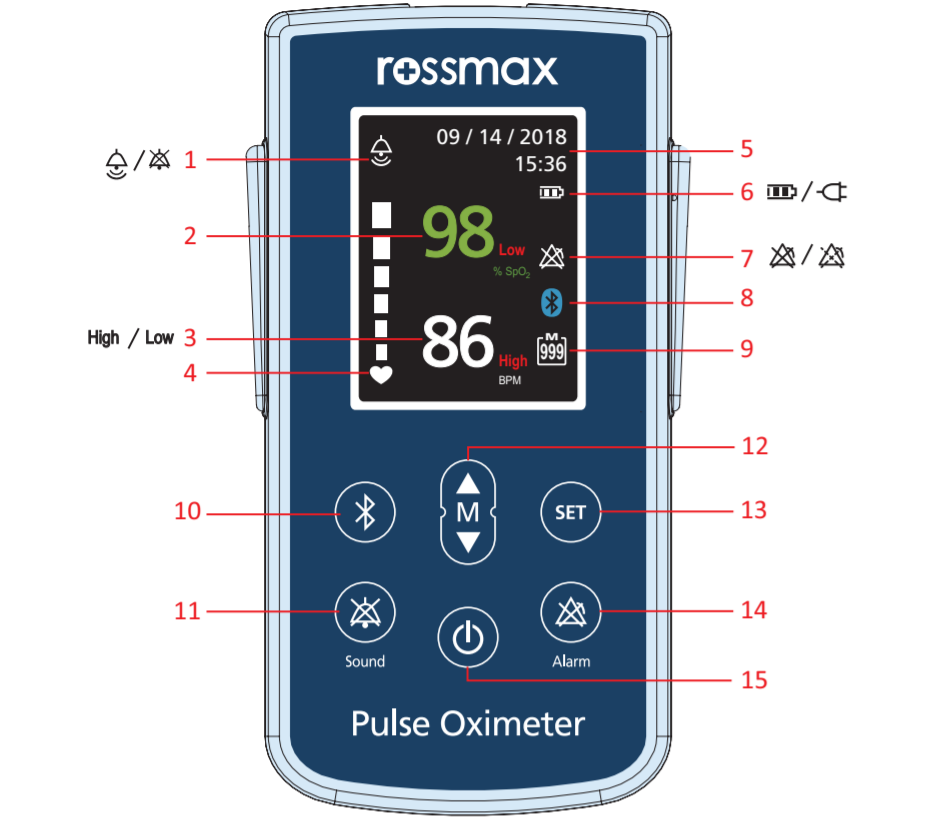


Introduction

Rossmax Handheld Pulse Oximeter is used to measure oxygen saturation in blood (SpO2) and pulse rate, also to issue warnings immediately. It is a non-invasive device intended for spot-check of adults, child, and infants with corresponding probe applied at home, hospital and clinics.

Attention: Consult the accompanying documents. Please read this manual carefully before use. Please be sure to keep this manual.

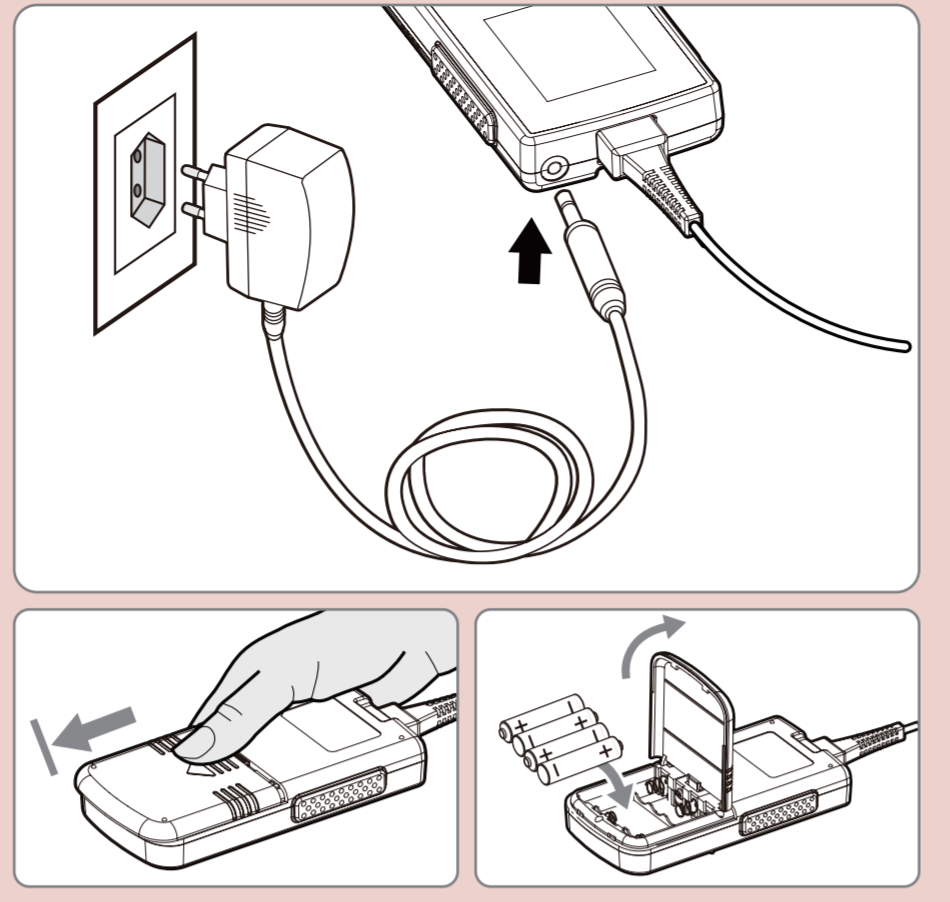
Name/ Functions of each part



No.	Item	Purpose
1	Sound icon	loud volume / silence
2	SpO2 icon	99% SpO2 SpO2 real-time value
		Low Reflects lower SpO2 warning.
3	Pulse Rate	75 BPM Pulse rate real-time value
		High / Low Reflects upper and lower pulse rate warning.
4	Pulse strength	
5	Date/Time	Show the Date (MM/DD/YYYY) / Time
6	Power status icon	Battery: Full batteries / Critically Low-Battery
		AC Power: AC power cable connected
7	Alarm icon	Alarm off / Alarm pause for 2 minutes
8	Bluetooth icon	For Bluetooth on / off for real-time data transmission
9	Memory icon	Collection of Memories Up to 999 memories
10	Bluetooth button	Press to turn on / off the Bluetooth function
11	Sound button	Press to turn on / off the heartbeat sound
12	UP/DOWN button	Press to scroll options and change value
13	SET button	Press to adjust default setting / Press to select the option
14	Alarm button	Press to pause alarm. To turn off alarm permanently, please entry "Settings" mode to set up.
15	Power button	Press to power on/off
16		it's for AC Adaptor.

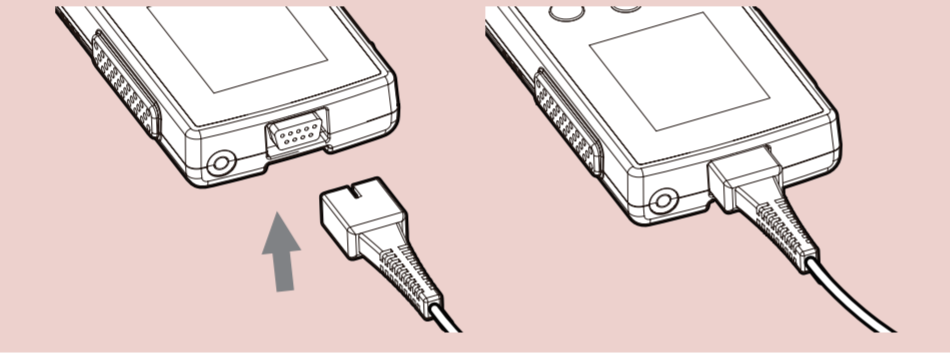
Power installation

Power can be supplied either by batteries or AC power cable.
AC power cable:
Plug AC power cable into AC power source and printout socket. Icon as " " show on the display.
Note: Once AC power is on, the power supply of the device is switched to AC power. Once AC power is off, the power supply of the device is switched to battery power.
Note: Don't regard " " icon as whether the AC power supply is normal.
Batteries:
1. Use thumb to slide battery cover out.
2. Insert or replace 4 "AA" batteries according to the (+/-) polarity.
Caution: Need to replace when the batteries icon " " is blinking on display/ while pressed the function button and nothing appears on display.
Caution: Batteries may leak or explode if used or disposed of improperly. Remove batteries if the device will be stored for long time. Do not use different types or brand of batteries at the same time.



Probe connection

Rossmax PA100/PB100/PC100/PD100/PF1000 or compatible probe is used. (Please install carefully.)
Caution: It may damage the efficiency of the device if not apply with a Rossmax compatible probe.



How to measure

- Press the Power On button for 1 second, when the device activates, the beep sound will last for 2 second.
Note: After the device activates, the software version will pop up directly. For first time activates, please refer to setting instruction.
 - Information of software version appears; insert one finger to probe, nail side up, for self-test.
Note: The device will turn itself off automatically after 1-minutes idling with two beep sounded.
 - The pulse strength shows "", pulse oximeter begins its measurement.
Note: The heartbeat is sounded though the buzzer. If need to become silence mode, press the sound button and the LCD screen will have the sound icon shown. If need the heartbeat sound, press the sound button to exit.
- Notes: 1. Don't remove your finger until the measurement is completed.
2. Any other problems or unrecognized icon, please refer to trouble shooting.

Sound volume control

• Press the button to control the sound volume.

for loud volume.
 for silence.

Loud volume

Silence

Bluetooth Setup

• Adjust the bluetooth setting by press the button.

Note: If the icon appears, it means the Bluetooth module is malfunctioning.

Wireless off

Wireless on

Bluetooth module is malfunctioning

Default Setting

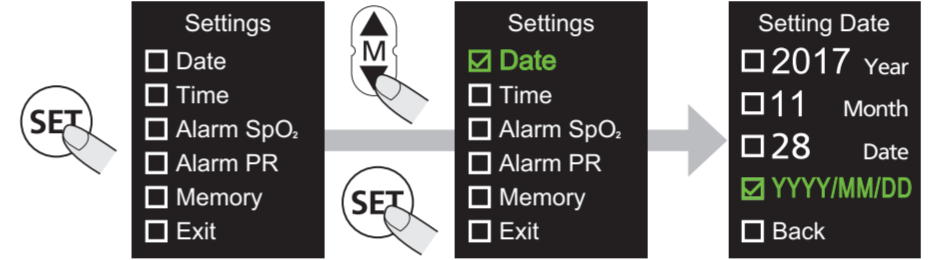
Date: 2018/01/01 Alarm PR: 100 High / 60 Low Alarm SpO2: 86%
Time: 00:00:00 Memory: OFF

How to Change Default Setting

- Press the button to enter the "Settings" mode and press to scroll through option.
 - Press button to select desired option.
 - To exit setting, select "Back/Exit" or wait for 30 second.
- Note:
1. Press , the device will turn off and the setup value will be reserved.
2. Waiting for 30 seconds to exit, the setup value will be reserved. Please check the setting value before use.

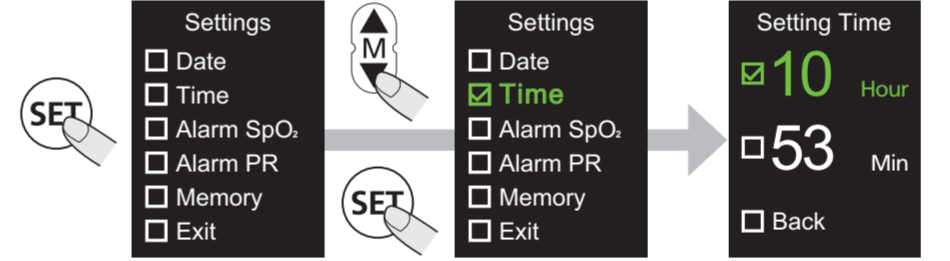
Date Setup

- Press the button and button to highlight "Date" option, and then press the button to select the option.
- Entry "Settings Date" mode, press the button to highlight the desired option and press the button to select the option.
- Press the button to change the value; press the button to save the desired value.
- Press the button to highlight another option or select "Back/Exit" to return.



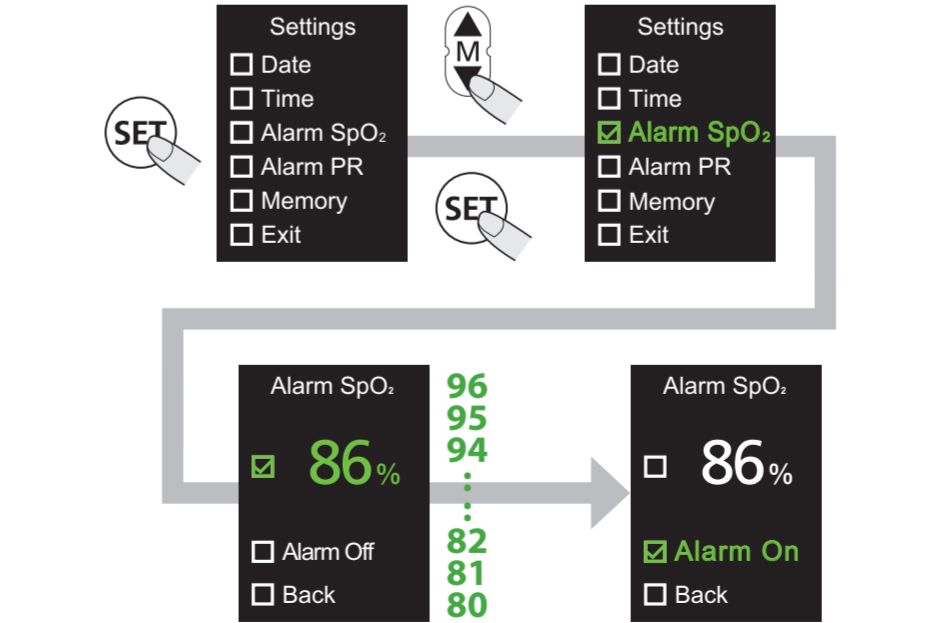
Time Setup

- Press the button and button to highlight "Time" option, and then press the button to select the option.
- Entry "Settings Time" mode, press the button to highlight the desired option and press the button to select the option.
- Press the button to change the value; press the button to save the desired value.
- Press the button to highlight another option or select "Back/Exit" to return.



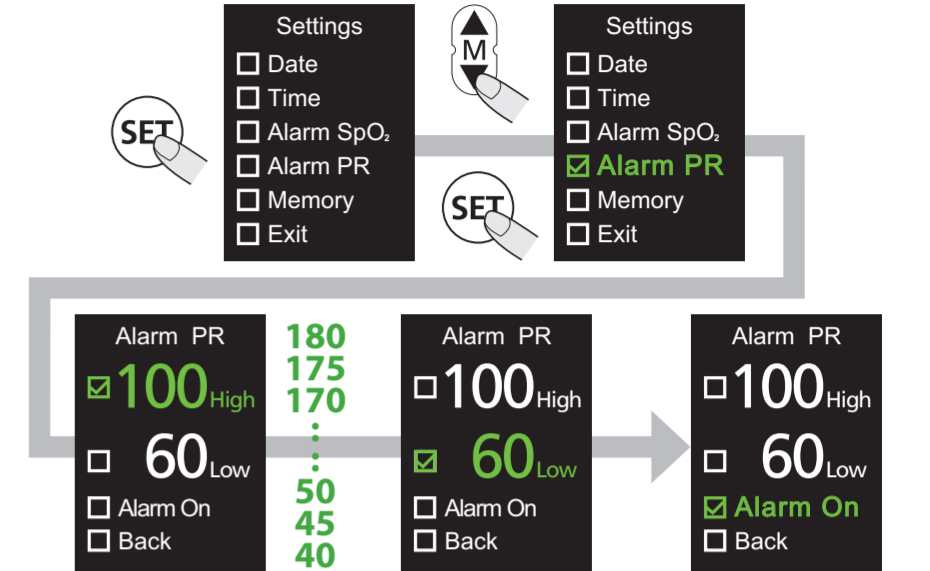
Alarm SpO2 Setup

- Adjustment Range: 96, 95, 94 ... 83, 82, 81, 80.**
The Unit of Adjustment: 1 % / per unit.
- Press the button and button to highlight "Alarm SpO2" option, and then press the button to select the option.
 - Entry "Alarm SpO2" mode, press the button to highlight the desired option and press the button to select the option.
 - Press the button to change the value; press the button to save the desired value.
 - Press the button to highlight another option or select "Back/Exit" to return.



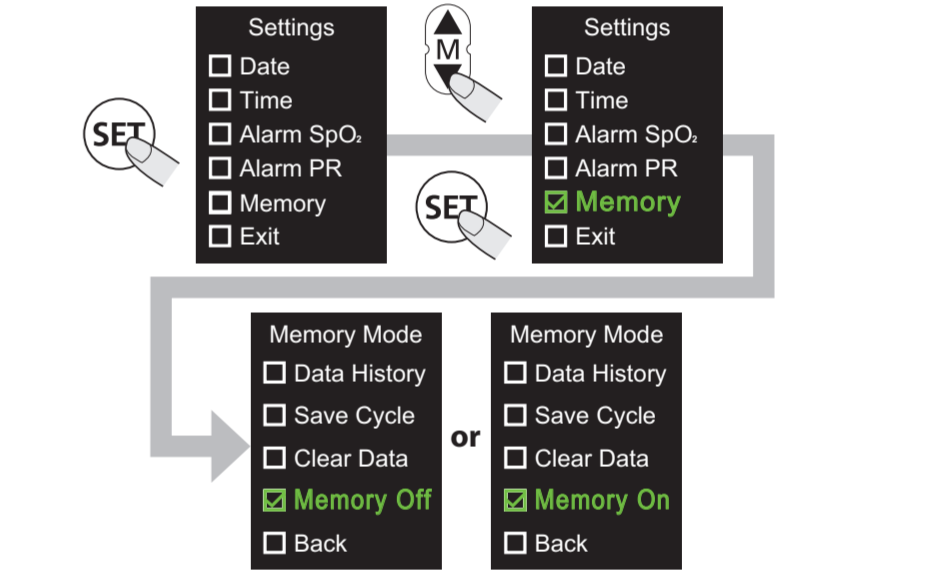
Alarm Pulse Rate Setup

- Adjustment Range: 180, 175, 170 ... 50, 45, 40.**
The Unit of Adjustment: 5 BPM / per unit
- Press the button and button to highlight "Alarm PR" option, and then press the button to select the option.
 - Entry "Alarm PR" mode, press the button to highlight the desired option and press the button to select the option.
 - Press the button to change the value; press the button to save the desired value.
 - Press the button to highlight another option or select "Back/Exit" to return.



Memories mode –Memory On

- Press the button and button to highlight "Memory" option, and then press the button to select the option.
- Entry "Memory Mode", press the button to highlight "Memory Off" option, and then press the button to select the "Memory On" option.
- Press the button to highlight another option or select "Back/Exit" to return.



Memories mode- Data History

- Press the button and button to highlight "Memory" option, and then press the button to select the option.
- Entry "Memory Mode", press the button to highlight "Data History" option, and then press the button to select the option.

